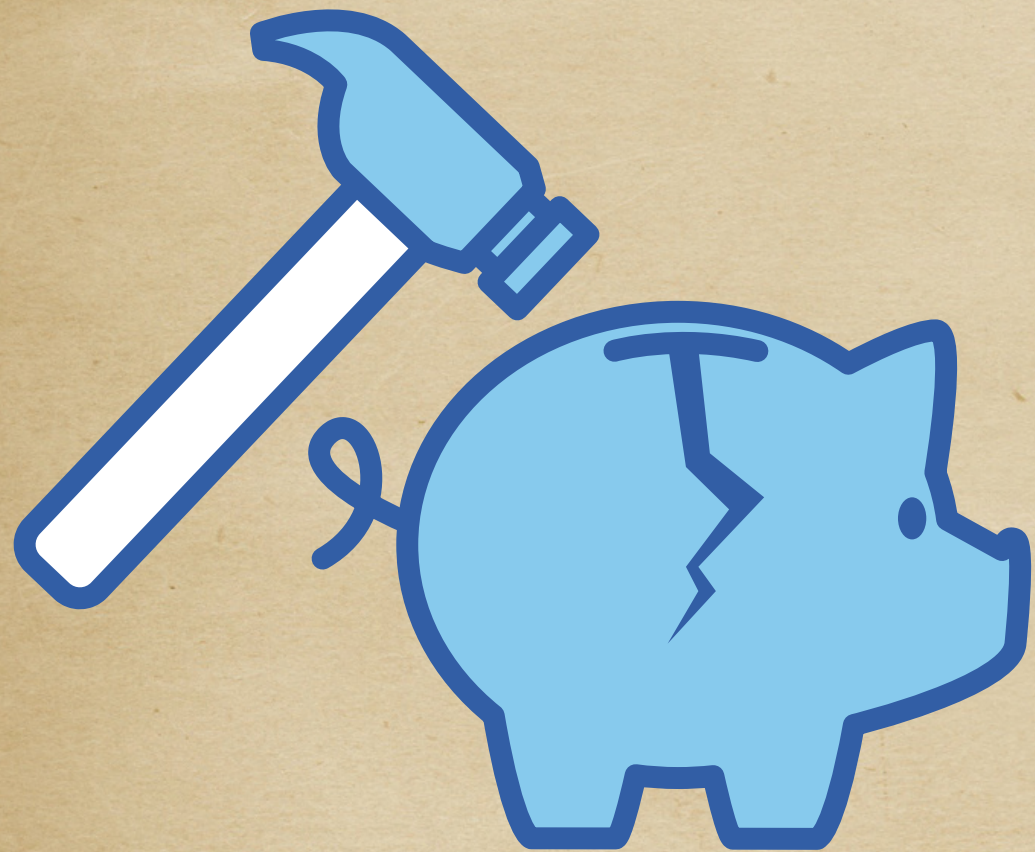
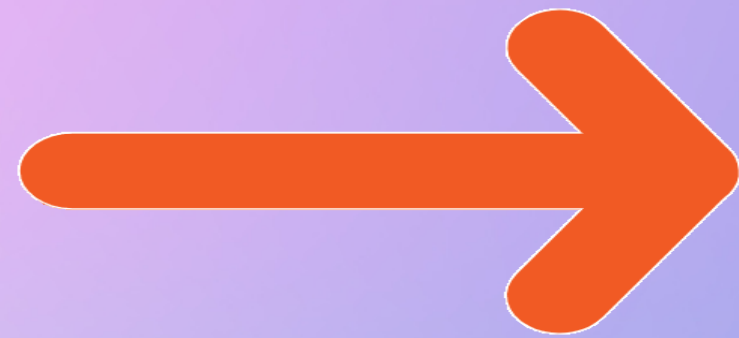
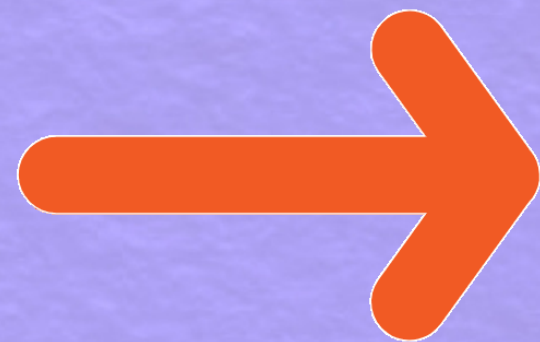


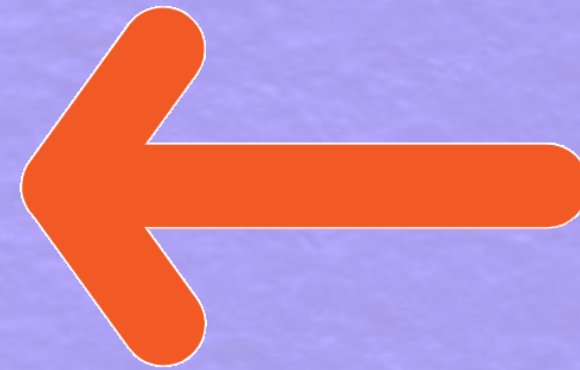
aur
paise
kaha se lau? Ooo











**1 DAY
@ Rs.100/-**



**30
DAYS**



**1 DAY
@ Rs.100/-**





120
DAYS





$$x = \frac{-b \pm \sqrt{b^2 - 4ac}}{2a}$$
$$M = \left(\frac{x_1 + x_2}{2}, \frac{y_1 + y_2}{2} \right)$$



120

-30

90 days

Rs.50000/-

given amount

1 Day @ Rs.100/-

↓
90 × 100 = 9000

50000 + 9000

= 59000



Rs.59000/-





120
DAYS



THANKYOU

created by TIGER ARMY